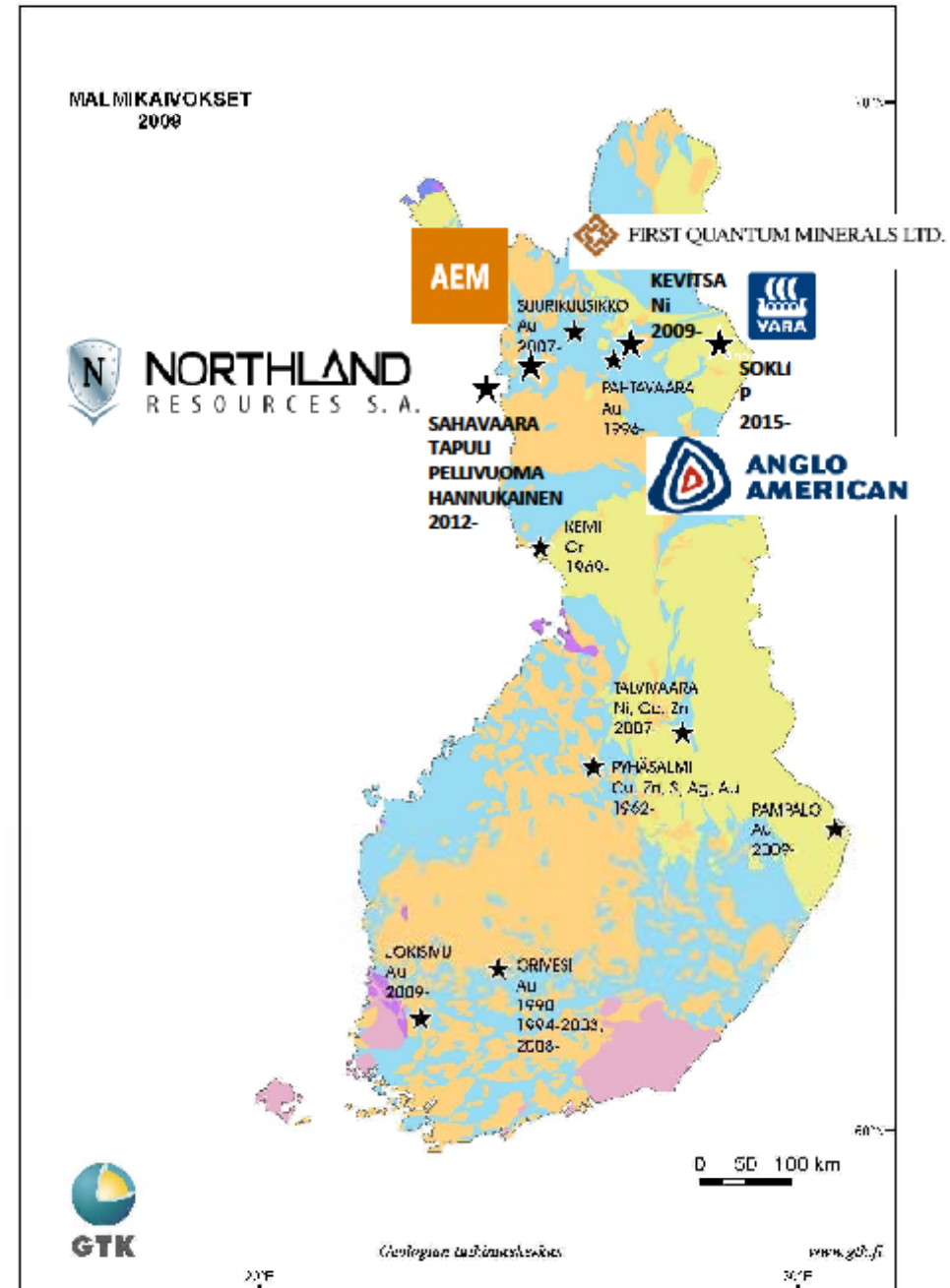


## NEW MINING PROJECTS IN LAPLAND

- AEM, Suurikuusikko, Kittilä (Au)
- First Quantum Minerals, Kevitsa (Ni, Cu)
- Lappland Goldminers Oy, Pahtavaara (Au)
- Northland Resources, Sahavaara, Tapuli, Pellivuoma, Hannukainen (Fe, Cu, Au)
- Yara, Sokli (P)
- Anglo American, Sodankylä?



# ARCTIC CORRIDOR

*The EU's most important link to the North*

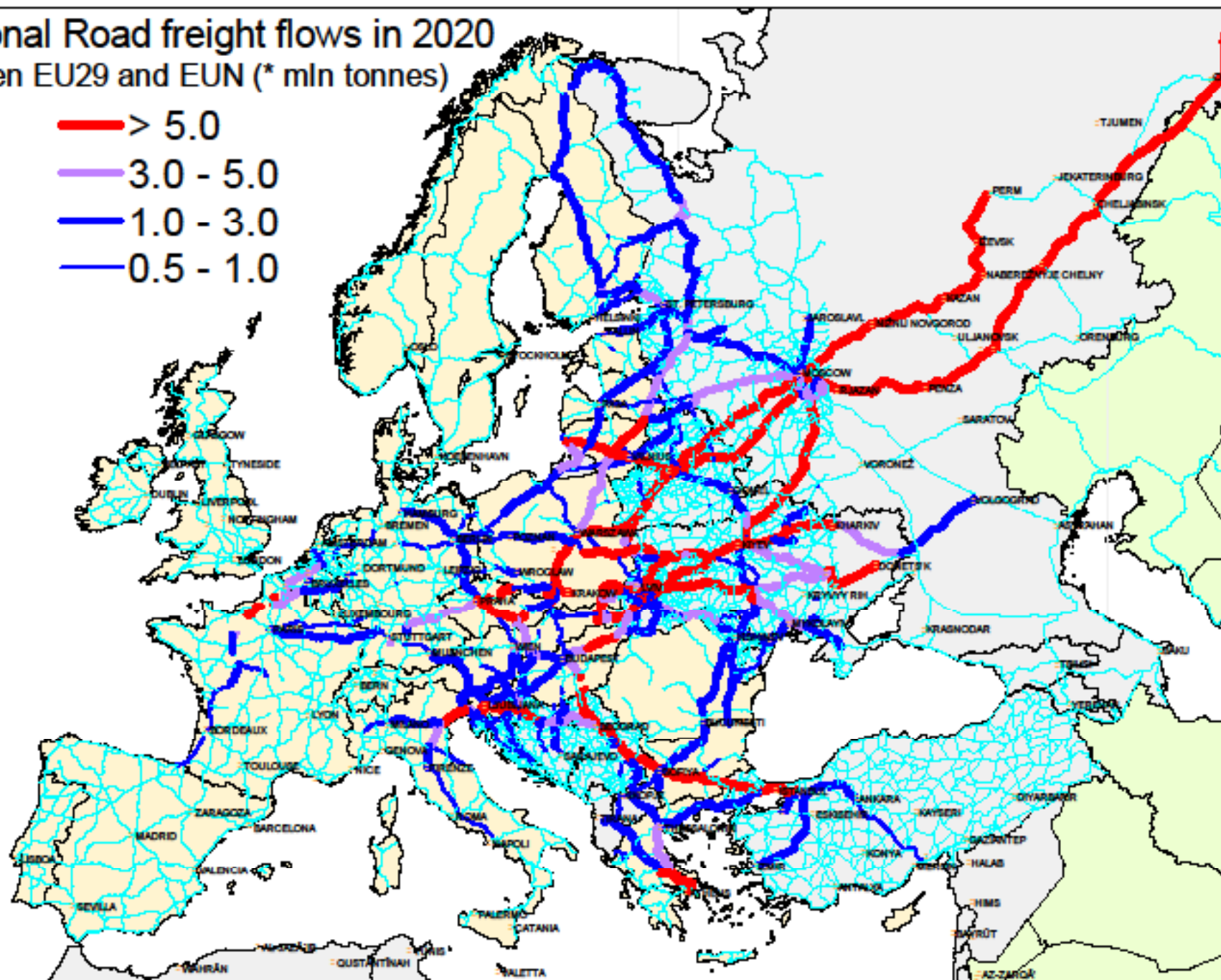
- The Arctic Corridor is an international corridor from Finland to Norway and Russia that facilitates the development of transport, energy management and livelihoods
- The Arctic Corridor links Finland and the Baltic Sea area to the deep-water harbours of the Arctic Sea, large production regions of the oil and gas industry and the western end of the Northern Sea Route



# International Road freight flows in 2020

between EU29 and EUN (\* mln tonnes)

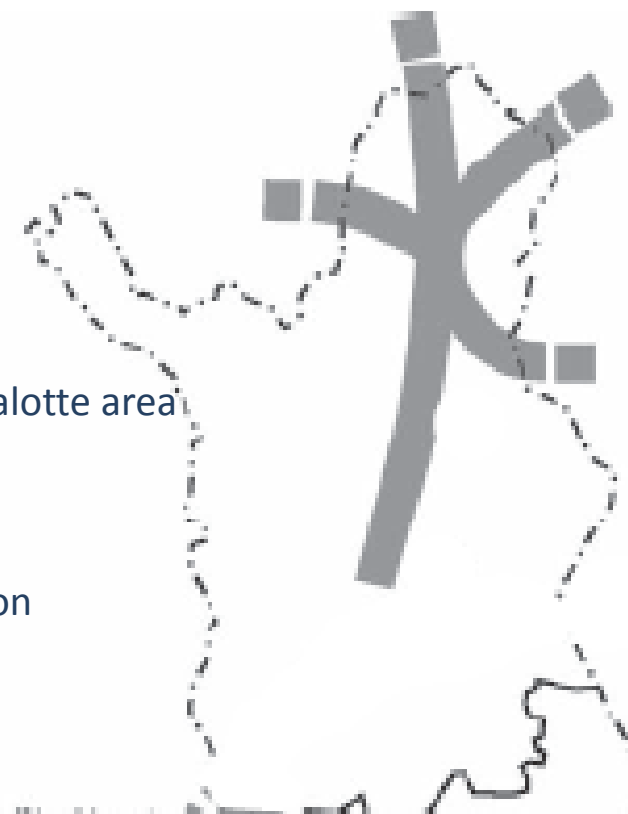
- > 5.0
- 3.0 - 5.0
- 1.0 - 3.0
- 0.5 - 1.0

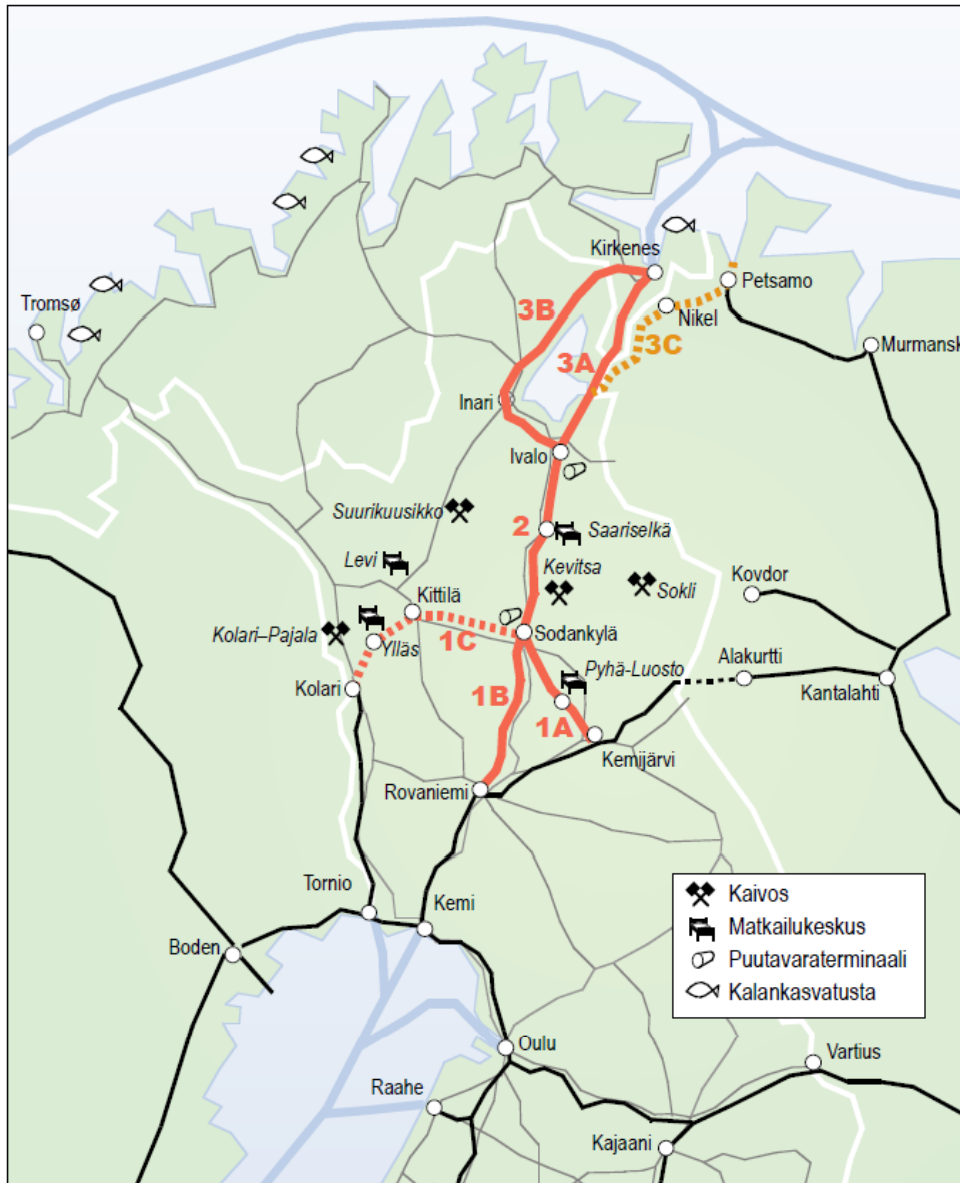


# ARCTIC CORRIDOR

## Action programme projects

- **Logistics and transport**
  - Route 4 improvement projects
  - Intelligent Road project
  - *Socio-economic study of Northern Lapland's railway*
  - Air freight and passenger transport development project & logistics centre
  - Road network service structures, Lotta-Murmansk
  - Road legislation development project in the North Calotte area
- **Marketing and corporate co-operation**
  - Arctic Corridor communication and marketing
  - Oil and gas industry subcontracts in the Barents region
  - Corporate co-operation and international marketing
  - Utilisation of major scientific projects
- **Energy**
  - Northern Lapland's forest energy resources and acquisition of energy timber
  - Northern Lapland's windmill parks
  - CHP power plant feasibility study

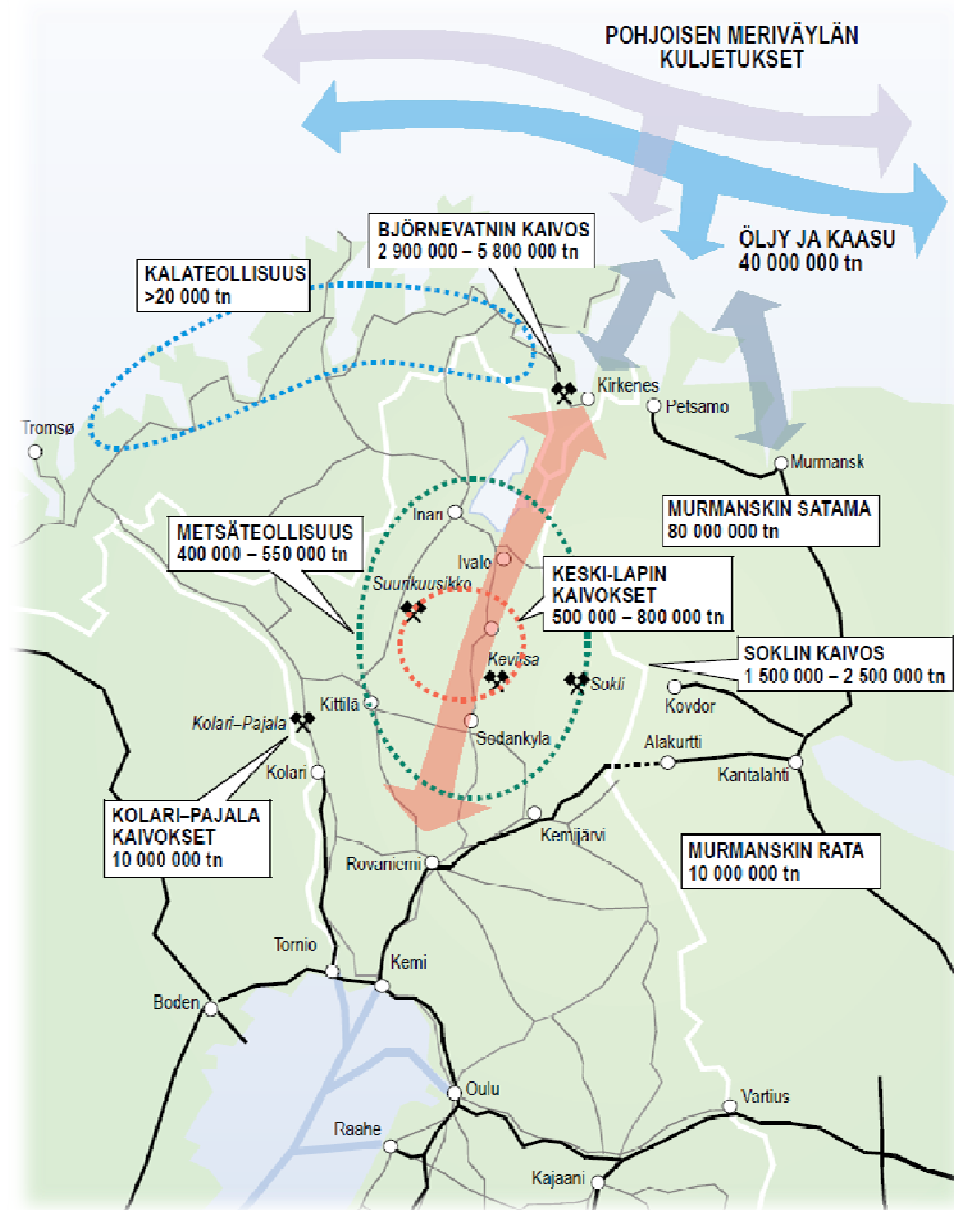




## Estimated construction costs

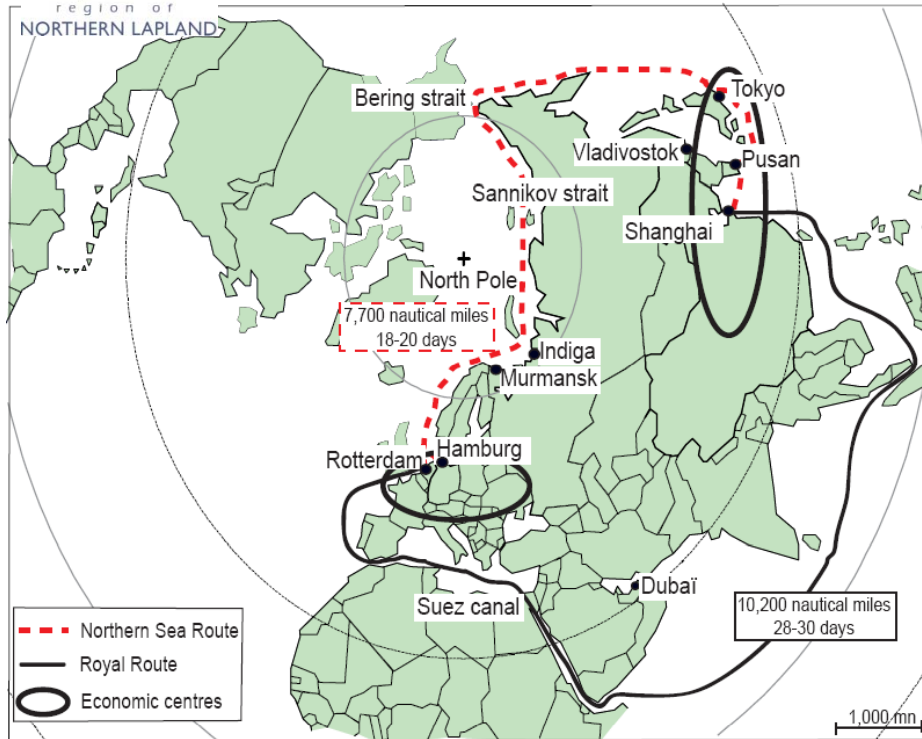
- 1A-2-3A: 763-1048 M€
- 1A-2-3B: 1107-1523 M€
- 1B-2-3A: 795-1092 M€
- 1B-2-3B: 1139-1567 M€
  
- in Finland 559–1039 M€
- in Norway 208–528 M€
  
- Kemijärvi–Sodankylä 173–238 M€
- Rovaniemi–Sodankylä 205–282 M€
  
- Sodankylä–Ivalo 256–352 M€
  
- Kolari–Sodankylä 222–306 M€

Transport potential in Lapland and neighbouring areas

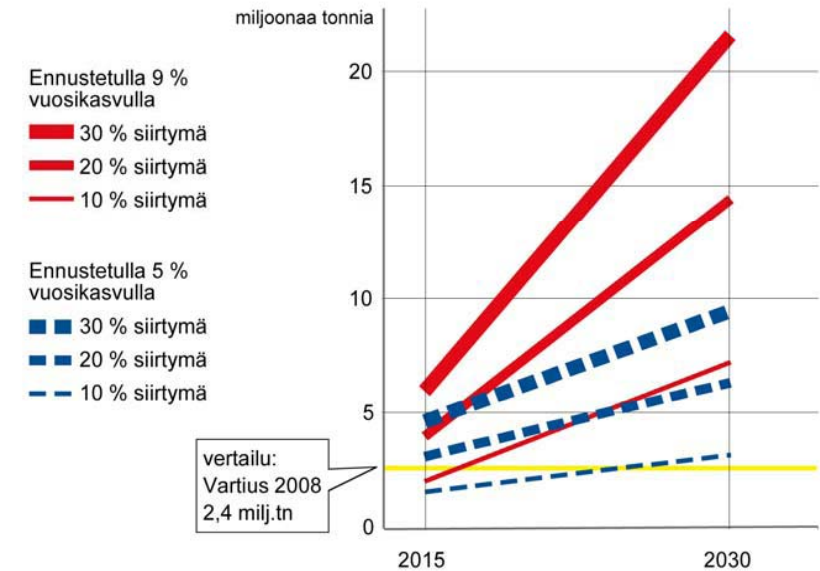




# Arctic Sea railway preliminary study



Jäämeren radalle Pohjois-Itämeren maista siirtyvien konttikuljetusten määrä vuosina 2015 ja 2030 eri lähtökohta oletuksilla



	before 2020	by 2030
<b>Transport potential</b>	railway to Sodankylä	(railway to the Arctic Sea)
<b>Mining industry</b>	500 000-800 000 tn	800 000-1 000 000 tn
<b>Forestry</b>	400 000-500 000 tn	400 000-500 000 tn
<b>Tourism &amp; commuting to work</b>	1 train / day	1-2 trains / day
<b>Fish transports &amp; other freight transports</b>	0	> 20 000 tn
<b>Northern sea route transports</b>	0	3-7 million tn (approx. 10 % of predicted container transports between the Northern Baltic Sea area and Asia will pass through Kirkenes harbour)
<b>Oil &amp; gas</b>	0	40 million tn along the Northeast Corridor --> 0.4 million tn transferred to the railway (1 % of oil and gas transports)
<b>TOTAL</b>	4-5 trains / day	20 - 40 trains / day



## REGION OF NORTHERN LAPLAND

*Thank you for your attention!*

timo.lohi@sodankyla.inet.fi

