

# Sentinel SuperPro Version 6.4.0 (Windows) Release Notes

---

This document contains a summary of the new features and installation details for Sentinel SuperPro™ version 6.4.0.

## Overview

Sentinel SuperPro protects your applications from unauthorized use across both the stand-alone and networked environments. The SuperPro software protection is empowered by a programmable hardware key that can encrypt data—providing you with a wide range of methods for securing multiple applications per key.

## New Features in This Release

The section below summarizes the new features for Sentinel SuperPro version 6.4.0. For complete information, see the *Sentinel SuperPro Developer's Guide*.

### Support for Sentinel SuperPro XM Keys

You can use Sentinel SuperPro XM keys for protecting your applications. These come with more memory (256 cells), a new algorithm engine based on the industry standard AES algorithm, and provide protection against brute force attacks on the write and overwrite passwords.

### License Sharing Allowed

Using Sentinel SuperPro 6.4.0, you can share the main licenses and sublicenses for a seat (a user running your application on a system). This means that multiple instances of the application running on the same system only count as one license—consuming one hard limit of the key.

By default, the license sharing is enabled (Main License sharing is enabled, sublicense sharing is disabled), however you may choose to disable it.

### Added New API Functions to the Sentinel SuperPro Client Library

In the Sentinel SuperPro 6.4.0 release, the following API functions have been introduced:

- `RNBOsproSetSharedLicense`

Turns on/off the license sharing for main licenses and sublicenses.

■ **RNBOsproGetKeyType**

Returns the following information about the key from which a license is obtained to run the protected application:

- ❑ Key family: Whether the key is a SuperPro or UltraPro key.
- ❑ Form factor: Whether the key is attached to a USB or parallel port.
- ❑ Memory size: The number of cells (including, the reserved cells).

■ **RNBOsproCleanup**

Releases the memory resources acquired by the Sentinel SuperPro client library.

## Sentinel License Monitor for Monitoring Keys and Licenses

The Sentinel Protection Server (earlier known as SuperPro server) runs an HTTP thread that displays the key and license details via a Web browser.

---

**Note:** The Sentinel SuperPro Monitoring Tool utility is no longer provided with Sentinel SuperPro version 6.4.0 onward.

---

## Cancel License Functionality for System Administrators

The system administrators can delete licenses via the Sentinel License Monitor interface. Refer to the Sentinel Protection Installer readme or Sentinel SuperPro System Administrator's Help for exact steps.

## Configuration File for Your Customers

You can now ship a configuration file (*sntlconfig.xml*) to your customers so they can set the network protocol, access mode, and heartbeat value on their own.

## Sentinel Protection Installer<sup>1</sup> for Deploying Redistributables

Sentinel Protection Installer is an integrated installer of the Sentinel System Driver and Sentinel Protection Server. It is typically meant for deploying these redistributables on a customer's computer.

## Sentinel Client Activator Integrated With the Toolkit

You can now configure the Sentinel Client Wizard from the SuperPro Toolkit at the time of adding elements (for both automatic and integrated protection).

You can obtain its documentation from the following path in your installation: *<install-dir>\SafeNet Sentinel\SuperPro\6.4\Sentinel Client Activator\Sentinel Client Activator\Help*.

---

1. SuperPro server has been renamed to Sentinel Protection Server and the Combo Installer has been renamed to Sentinel Protection Installer.

## Sentinel USB Driver is WHQL Certified

The Sentinel System Driver for USB keys is Microsoft Windows Hardware Quality Labs (WHQL) certified for Windows 2000, XP, and Server 2003.

## Part Number renamed as Model number

From this release forward the term “*Part Number*“ which has been the customer identifier used for key ordering purposes by your software vendor, has been renamed to “***Model number***“

# Installation

This section contains all the details regarding the Sentinel SuperPro 6.4.0 installation.

## System Requirements

Note that the following requirements are necessary:

Hardware Requirements	Software Requirements
<ul style="list-style-type: none"> <li><input type="checkbox"/> <b>Processor</b> Pentium II or above (450 MHz or above)</li> <li><input type="checkbox"/> <b>Monitor and its Settings</b> VGA Monitor</li> <li><input type="checkbox"/> <b>Hard Disk Space</b> 105 MB free hard disk space</li> <li><input type="checkbox"/> <b>RAM</b> 64 MB RAM</li> <li><input type="checkbox"/> <b>Peripherals</b> A USB port or a parallel port to attach the hardware key</li> <li><input type="checkbox"/> <b>Disk Drive</b> CD-ROM drive</li> </ul>	<ul style="list-style-type: none"> <li><input type="checkbox"/> <b>Operating System</b> Windows 95/98SE/ME/NTSP 4/2000/XP/Server 2003</li> <li><input type="checkbox"/> <b>Web Browser</b> Internet Explorer 5.0 or higher to view the Help files</li> <li><input type="checkbox"/> <b>PDF File Viewer</b> Adobe Acrobat 4.0 or higher to view the documentation in PDF.</li> </ul>

## Upgrade Information for 6.3.x Developers

The developers using Sentinel SuperPro version 6.3.x must note the following information:

- Sentinel SuperPro 6.4.0 can co-exist with previous versions of Sentinel SuperPro. However, the Sentinel System Driver and Sentinel Protection Server will be upgraded. These components are backward-compatible and are now installed at the following path on a Windows system:
  - Sentinel System Driver**  
<OS Drive>:\Program Files\Common Files\SafeNet Sentinel\Sentinel System Driver
  - Sentinel Protection Server**  
<OS Drive>:\Program Files\Common Files\SafeNet Sentinel\Sentinel Protection Server
- If you have upgraded from Windows 9x (Windows 95/98/ME) to Windows NT-based OS (Windows NT/2000/XP/2003), you must first uninstall Sentinel SuperPro using its set up executable included on the installation CD (and not through the **Add/Remove Programs** option in **Control Panel**) before installing Sentinel SuperPro 6.4.0.

## Installation Instructions

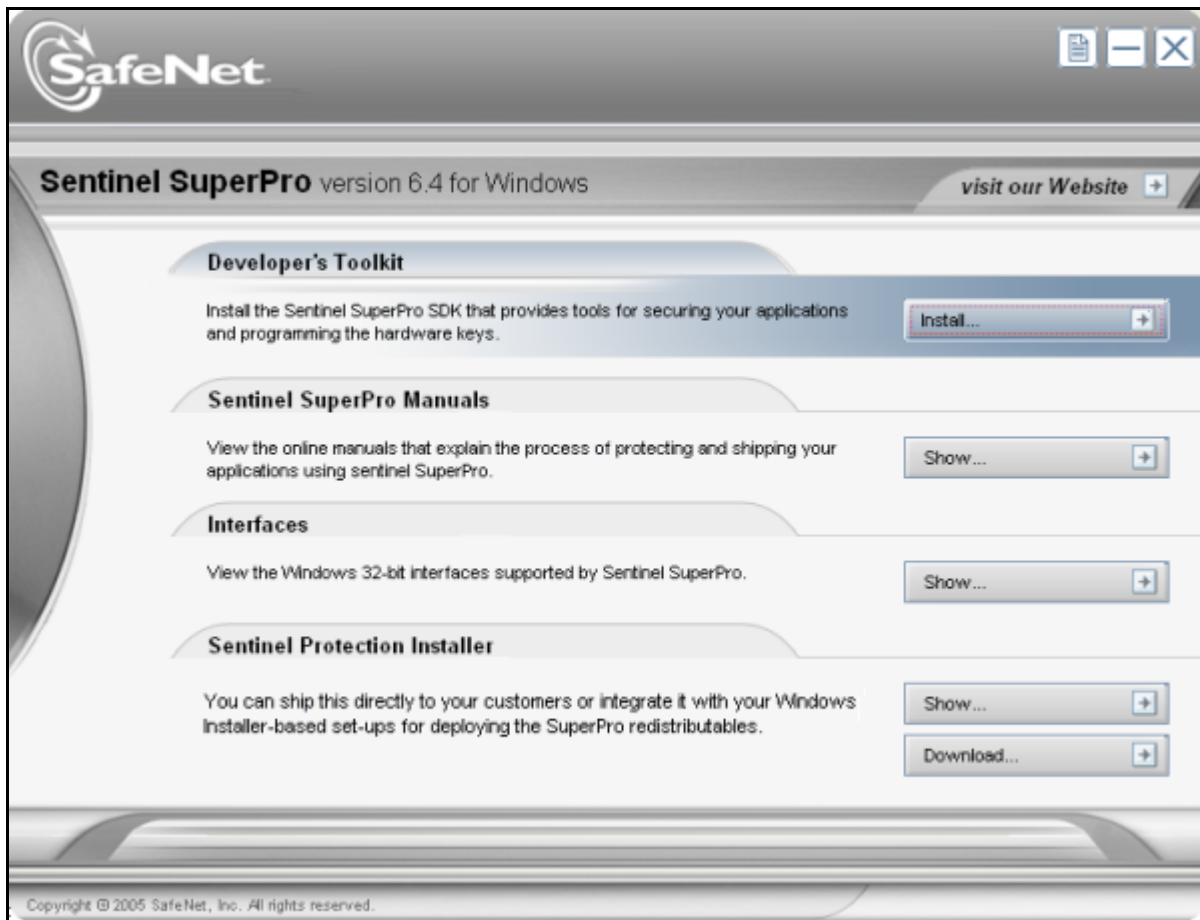
**Note: Administrator privileges required**

In order to set up Sentinel SuperPro on Windows NT-based systems, you must have Administrator privileges.

1. Insert the installation CD in the CD drive.
2. You may need to navigate into the CD if the autorun does not work. Double-click *StartHere.exe*. The **StartHere** screen (shown below) appears.
3. Click the **Install** button to launch the setup program. Follow the on-screen instructions to complete the Sentinel SuperPro installation.

**Note: The installer upgrades the Windows Installer version to 2.0**

Sentinel SuperPro installation requires Windows Installer version 2.0 or higher on the target system. If a lower version is found, the installer will inform the user and upgrade automatically. If you are not sure you want to update the Windows Installer, do not run this program.



The StartHere Screen for Sentinel SuperPro Installation

## List of Installed Components

The following components will be installed at: <installdir>\SafeNet Sentinel\SuperPro\6.4, when you have installed Sentinel SuperPro using the **Complete** setup type.

### Installation Directory Structure

File/Folder Name	Description
\Configuration File Template	Contains the configuration file for your customers.
\Interfaces	Contains client library interfaces for popular compilers, such as Microsoft Visual C++, Visual Basic, COM, .NET and so on. Refer to the directory for details.
\Manuals	Contains various documentation items for this release.  Please note that the documentation provided in this directory may not be accessible from the Toolkit or any other utility. Hence, we suggest you to access them directly from this location.
\MSVCDev	Contains a sample program, header file, and libraries for Microsoft Visual C++.
\Safe Sample	Contains an example for customizing the SAFE program for field activation.
\Sentinel Client Activator	Contains Sentinel Client Activator files, including its complete documentation.
\Sentinel License Monitor	Contains the source code (.java and .class files) for modifying Sentinel License Monitor.
\Sentinel Protection Installer	Contains a ready-to-ship installer for deploying Sentinel System Driver and Sentinel Protection Server. This directory also contains the merge modules and MSI for both components that you can use for customizing their installation.
\Tools	Contains the SuperPro Toolkit and other stand-alone applications (like the Field Exchange Utility). This location will also contain the DSAFE and USAFE objects generated for the field activation.



<b>Pacific Rim</b>	
E-mail	techsupportpacrim@safenet-inc.com
<b>Australia and New Zealand</b>	
Telephone	(61) 3 9882 8322
Fax	(61) 3 9882 0588
<b>China</b>	
Telephone	(86) 10 8851 9191
Fax	(86) 10 6872 7342
<b>India</b>	
Telephone	(91) 11 2691 7538
Fax	(91) 11 2633 1555
<b>Taiwan and Southeast Asia</b>	
Telephone	(886) 2 27353736
Fax	(886) 2 27352383

© Copyright 2005, SafeNet, Inc.  
All rights reserved.  
<http://www.safenet-inc.com>

All attempts have been made to make the information in this document complete and accurate. SafeNet, Inc. is not responsible for any direct or indirect damages or loss of business resulting from inaccuracies or omissions. The specifications contained in this document are subject to change without notice.

SafeNet, Sentinel, SuperPro and UltraPro are either registered trademarks or trademarks of SafeNet, Inc. Microsoft, Windows, Windows NT, Windows 2000, Windows XP, Windows Server 2003 and Internet Explorer are either trademarks or registered trademarks of Microsoft Corporation in the United States and other countries. All other product names referenced herein are trademarks or registered trademarks of their respective manufacturers.

Part Number 001689-001, Revision A  
February 2005

