



PROJECT: TÜRI BASIC SCHOOL COMMUNITY GARDEN / FOREST GARDEN

Inga Kärge
17.10.2024





GARDEN

infrastructure
and buildings

educational
innovation

3 pillars of the community garden

project description

What, why, for whom, and how?

- A community garden with an educational purpose will be established.
- The goal is to increase environmental awareness, promote sustainability and local food security, strengthen the community and enrich educational programs through practical and real-life learning experiences.
- The primary users of the garden will be the students of Türi Basic School, but the garden will also be open to the local community and visitors.
- The school garden infrastructure will be built using local materials, relying on active community involvement through workshops and joint events. The garden will emerge through dynamic collaboration between the community and the school.





creating the forest garden has begun

- The garden will be designed according to permaculture principles to mimic natural patterns.
- It will include fruit trees, berry bushes, and perennials.
- This design will minimize maintenance requirements, allowing the garden to remain manageable.

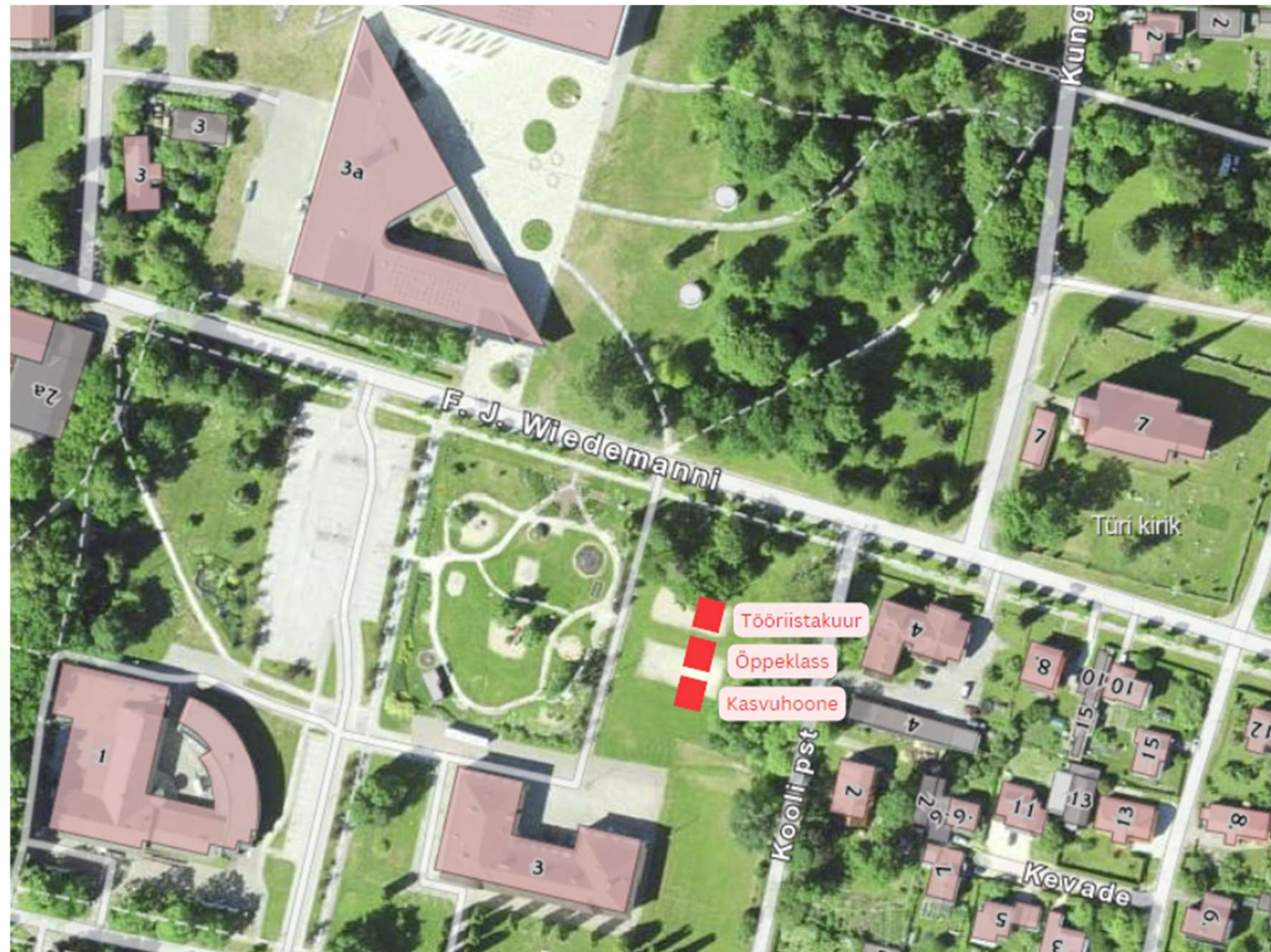


student engagement – the garden is not just for gardening

- integration of the garden into the curriculum
- everyday learning process
- creative projects
- joint activities
- principles of democratic education



site plan of
the buildings

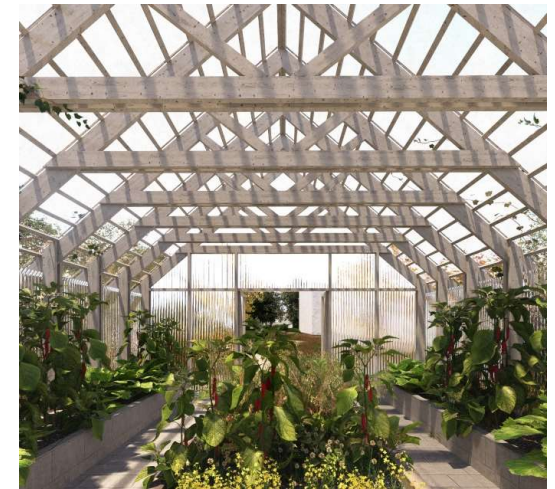
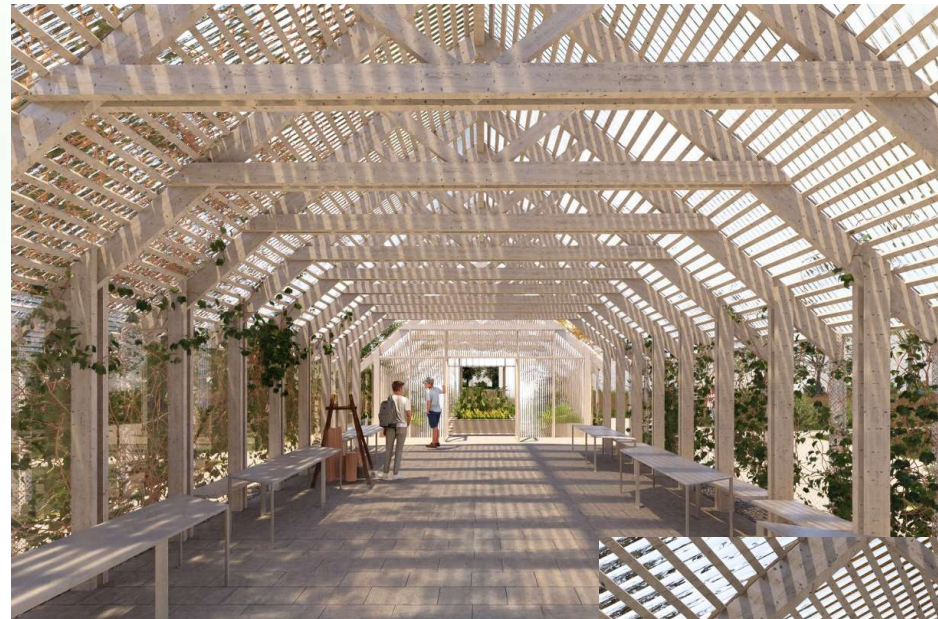


preliminary visuals for the buildings



Three buildings will be built:

- Storage shed
- Classroom
- Greenhouse (planned for the future)



visuals



time schedule for buildings

- March ... July 2024 – funding project
- June 2024 - land use for the school
- Autumn 2024 – design brief
- November 2024 ... March 2025 - design phase
- Spring/Summer 2025 - construction: utilities, load-bearing frame and roof
- Summer 2025 ... Summer 2026 - workshops and non-load-bearing elements in collaboration with the community



after completion (although the garden will never be „ready“)

- Using active learning methods and hands-on techniques is important for studying natural sciences. That's why Türi Basic School will keep using and developing the garden space and outdoor classroom.
- Getting the community involved at every stage of the project helps build strong local support. This will make sure the garden and its facilities can be used for various events and activities. Working together with the school, local municipality and community will help keep the project going.
- The plan is to hold different workshops and events in the garden, especially during the summer and school holidays. Renting the space will allow the school to invest the earnings back into the garden so it will always improve.



thank you!

